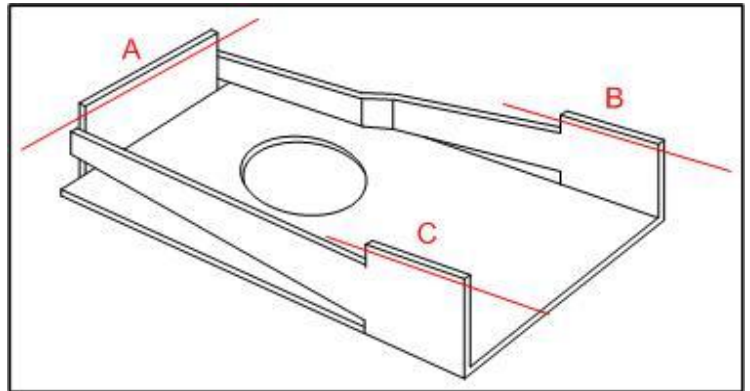


Coupler Centering Spring Fix

Like many other model railroaders, I have struggled with couplers. I choose to use the popular Kadee knuckle couplers using Kadee centering springs because they work well, look good and don't lose their shape, however the Kadee couplers work best in Kadee's draftgear boxes.

On Athearn, Accurail and other rolling stock the draftgear boxes are too shallow for the Kadee centering springs. The stamped metal clip on Athearn cars and other manufacturers' gear boxes do not fully close on the boxes, consequently the couplers hang too low and the spring binds and does not center properly.



I've bent the glad hands up, which makes them look like a fishing hook, or used shims under the car body to keep the glad hands from catching on turnout frogs and crossings. Neither of those solutions is satisfactory.

I have solved the problem by simply cutting approximately 1/64" from the centering spring at points A, B, and C. using a small, sharp scissors

Solution to wiggly jiggly railroad cars

Nothing spoils the illusion of heavy tonnage trains, than watching a bunch of wiggling and shaking cars as they roll down the track. Some have suggested one of the trucks should be tightened down, but that only works if the looser truck is leading, and then only some of the time. Cars with tightly mounted trucks tend to derail over turnouts.

I have had great success with this alteration to the truck bolster that I've done to all my rolling stock.

I use a small round file, about 1/4" in diameter to file a kerf on top of the bolster, parallel with the wheels. This creates two points of contact, thus keeping the cars from rocking. I mount both trucks flopping loosely and derailments are nearly non-existent, while the cars are very stable. I once found a bolster screw lying between the rails, not knowing which car had lost it. I was sweating bullets wondering in which tunnel the train would derail, then one day I picked up a boxcar that had been spotted on the wrong track. Even though the truck was missing the screw, it had stayed on the track for a very long time.

